



20.1.98

TAMILNADU SLUM CLEARANCE BOARD

TYPE DESIGN NO. 8/93

TWENTY FOUR IN ONE BLOCK  
FOUR STOREYED

SCALE: 1" = 4'-0" (1:50)

REFERENCE:

D	R.C. FRAMED WITH G.I. SHEET DOOR	3'0" x 6'6" (914 x 200)
D1	FERRO-CEMENT DOOR (WITHOUT FRAME)	2'0" x 6'0" (610 x 183)
W	STEEL WINDOW	4'0" x 4'0" (1220 x 1220)
J	DOOR	2'0" x 3'0" (610 x 910)
V	R.C. JALI VENTILATOR	2'0" x 2'0" (610 x 610)

AREA DETAILS:  
PLINTH AREA PER TENEMENT  
= 236 sqft (or) 21.9 m<sup>2</sup>

FLOOR AREA (multi-purpose room)  
FOUR STOREYED UNIT

FOURTH FLOOR  
① ② ③ ④ = 12.3 m<sup>2</sup>  
⑤ ⑥ = 12.2 m<sup>2</sup>

F.F. & TYPICAL FLOOR  
① ② ③ ④ = 13.4 m<sup>2</sup>  
⑤ ⑥ = 13.0 m<sup>2</sup>

GROUND FLOOR  
AREA OF STAIRCASE = 6.6 m<sup>2</sup>  
AREA OF PASSAGE = 5.9 m<sup>2</sup>  
12.7 m<sup>2</sup>

F.F. & TYPICAL FLOOR  
AREA OF STAIRCASE = 6.8 m<sup>2</sup>  
PASSAGE = 7.2 m<sup>2</sup>  
14.0 m<sup>2</sup>

PLINTH AREA PER TENEMENT (G.F.) = 19.18 m<sup>2</sup>  
(EXCLUDING STAIRCASE & PASSAGE)

PLINTH AREA PER TENEMENT (F.F.)  
(EXCLUDING STAIRCASE & PASSAGE)

amended as suggested by  
HUDCO  
sd xx 26.6.96  
DEPUTY PLANNER

CONSTRUCTION OF  
TENEMENTS AT  
NAGATHAMMAN KOIL  
PS NO. 13 Blocks  
BE Kodambakkam  
Village, Chennai.

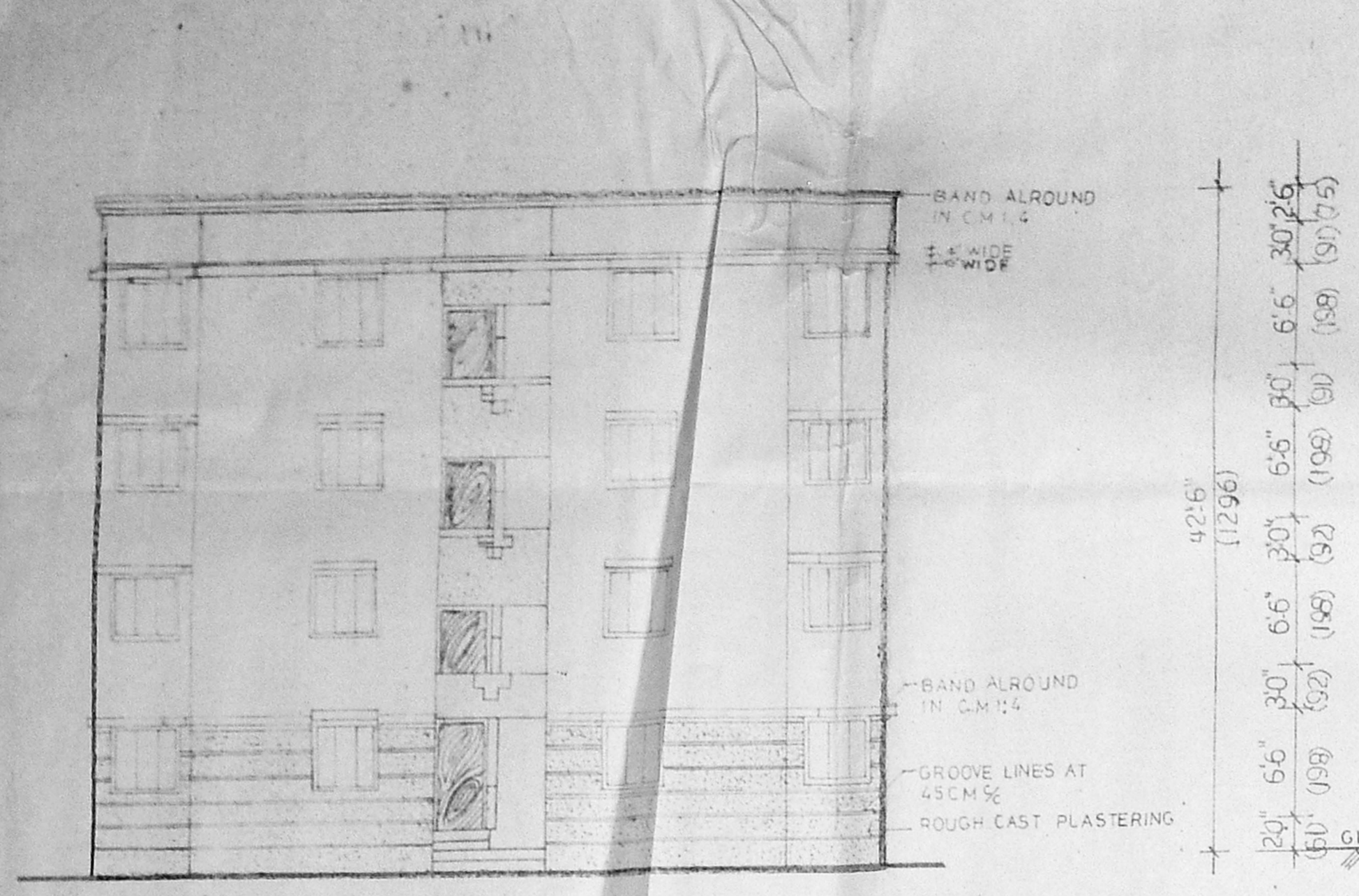
sd xx 31.3.93 PREPARED BY ASST. PLANNER  
sd xx 14.93 ASST. PLANNER  
sd xx 1.93 DEPUTY PLANNER

SUPTD.G. ENGINEER  
CHIEF ENGINEER

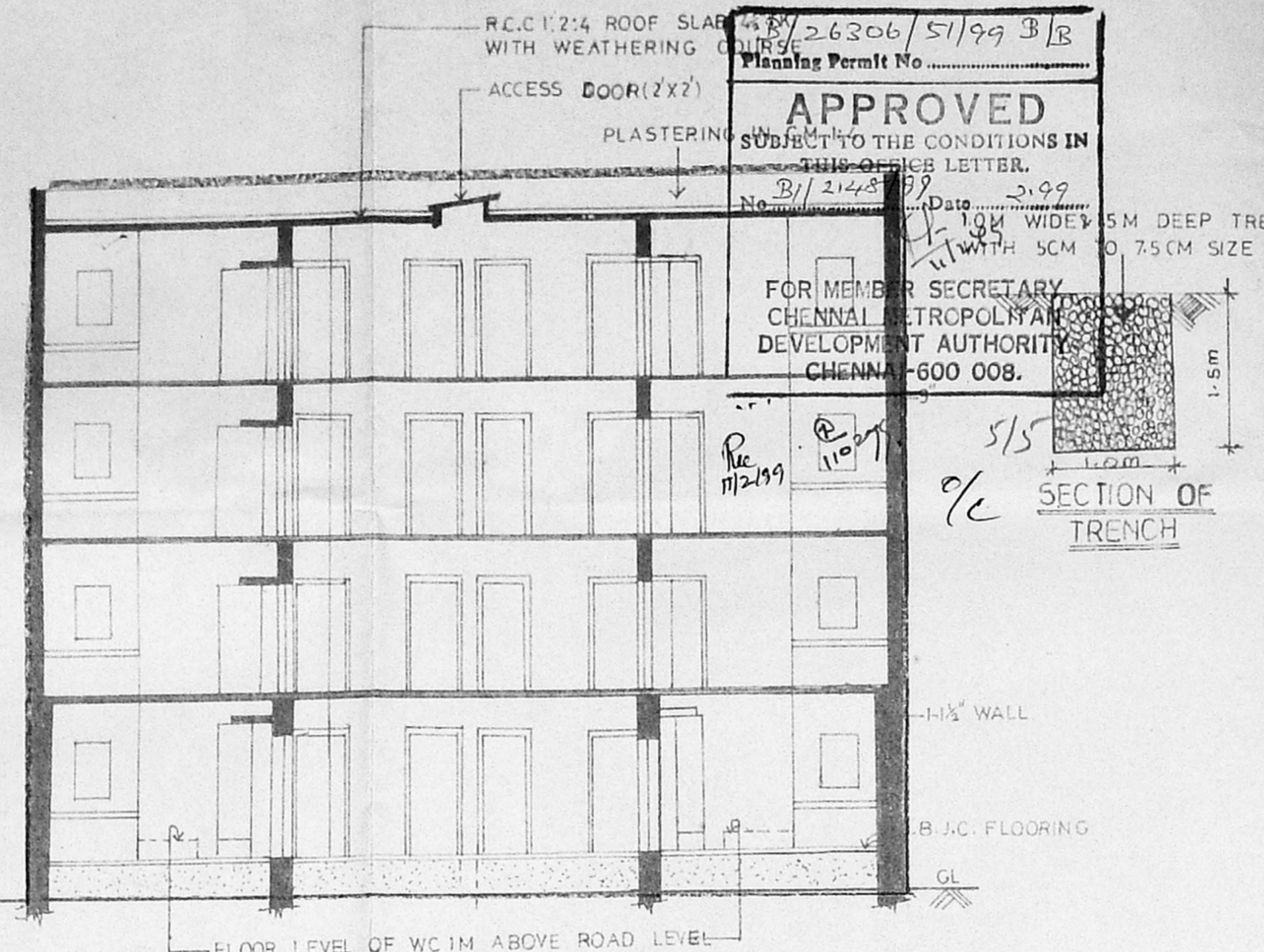
2/2

**CMDA (B)/PP No. 1**  
C. No. 8/1-2750/92  
Asst. \_\_\_\_\_  
P. A. \_\_\_\_\_  
A.P. \_\_\_\_\_  
D.P. \_\_\_\_\_

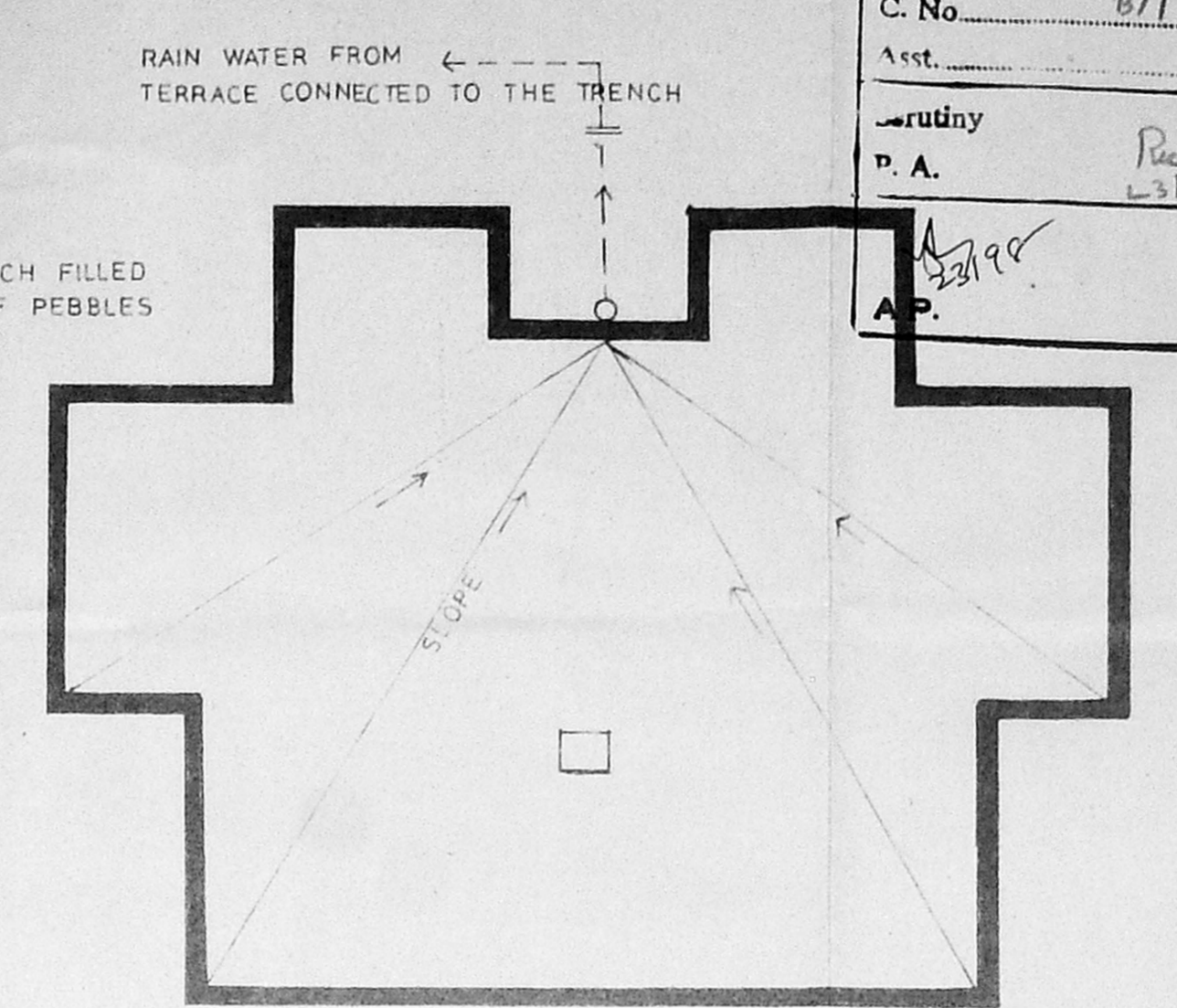
26206/51/99 B/B  
Planning Permit No. \_\_\_\_\_  
**APPROVED**  
SUBJECT TO THE CONDITIONS IN  
OFFICE LETTER.  
No. B/2148/99 Date 3-9-99  
FOR MEMBER SECRETARY,  
CHENNAI METROPOLITAN  
DEVELOPMENT AUTHORITY  
CHENNAI-600 008.



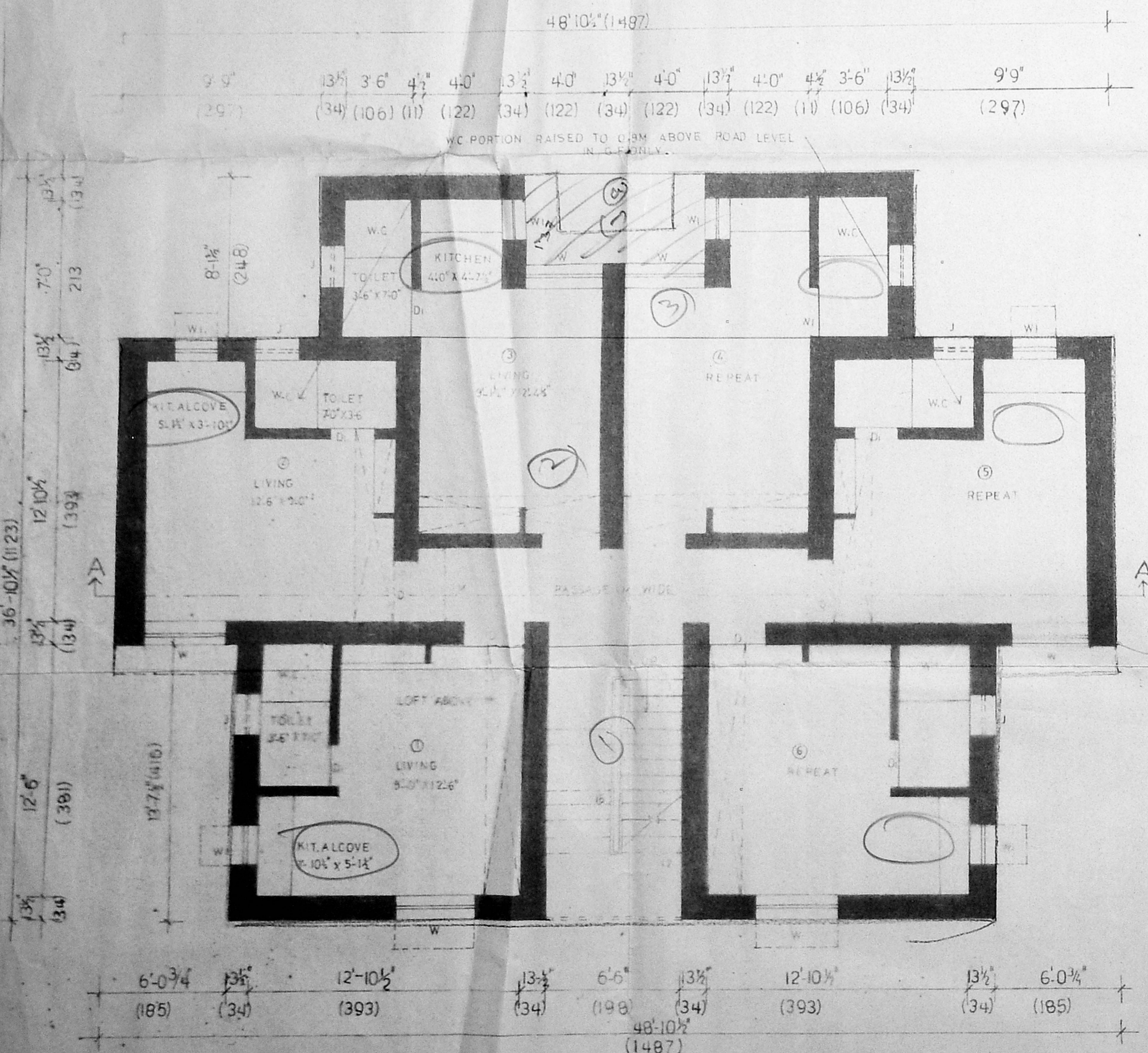
FRONT ELEVATION (4 STOREYED)



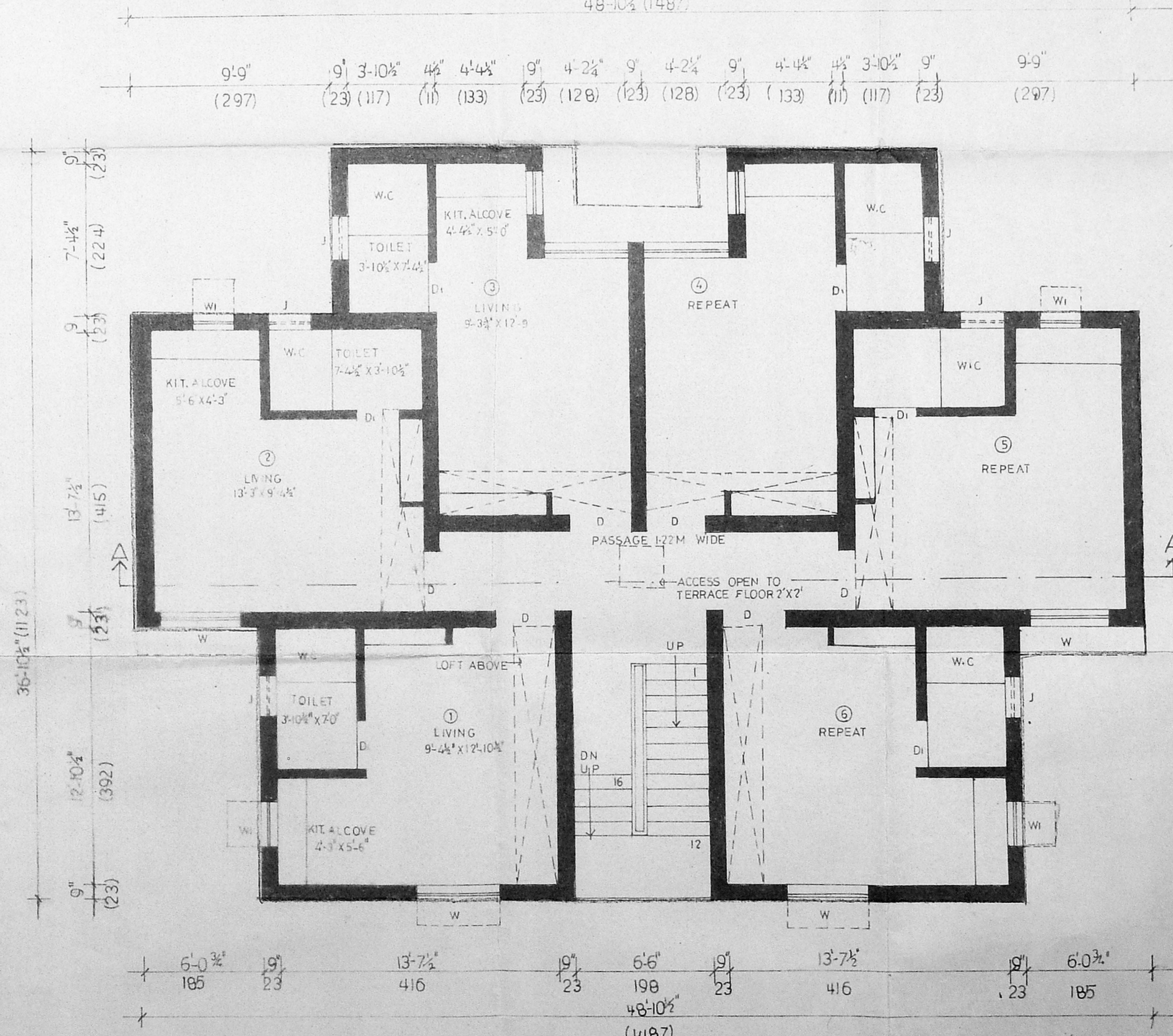
SECTION ON 'AA' (4 STOREYED)



TERRACE FLOOR PLAN  
RAIN WATER COLLECTION ARRANGEMENT



GROUND FLOOR PLAN (4 STOREYED) SCALE: 1" = 4'-0" (1:50)



FIRST & TYPICAL FLOOR PLAN (4 STOREYED)

/TRUE COPY/

traced by  
M. Theodor 20.1.98  
asst. planner